

**THE CORPORATION OF THE TOWNSHIP OF HARLEY**

**BY-LAW NO. 2026-12**

**BEING A BY-LAW TO REGULATE ELECTION SIGNS WITHIN THE  
TOWNSHIP OF HARLEY**

**WHEREAS** subsection 11(3), paragraph 1 of the Municipal Act, 2001, S.O. 2001, c. 25, as amended authorizes a municipality to pass by-laws respecting highways over which it has jurisdiction; and,

**WHEREAS** subsection 11(3), paragraph 7 of the Municipal Act, 2001, S.O. 2001, c. 25, as amended authorizes a municipality to pass by-laws respecting signs; and,

**WHEREAS** subsection 63(1) of the Municipal Act, 2001, S.O. 2001, c. 25, as amended authorizes a municipality, if it passes a by-law for prohibiting or regulating the placing of an object on a Highway, to provide for the removal of any object placed on a Highway in contravention of that by-law; and,

**AND WHEREAS** the Council of the Corporation of the Township of Harley wishes to establish clear, simple rules to protect public safety, maintain municipal neutrality, and safeguard municipal infrastructure during elections;

**NOW THEREFORE** the Council of the Corporation of the Township of Harley enacts as follows:

**1. Definitions**

**In this By-law:**

- **“Election Signs”** means any sign, poster, banner, or device intended to promote or oppose any candidate or question in a municipal, provincial, or federal election.
- **“Intersection”** means the area where two or more roads meet and includes a 6-metre sight triangle measured from the point of intersection along the edges of the roads. (see Diagram 1 of this By-Law)
- **“Municipal Property”** means land, buildings, parks, facilities, or infrastructure owned or controlled by the Township of Harley.
- **“Polling Station”** means the location designated for voters to cast their ballots on election day.

**2. Prohibited Locations**

No election signs shall be placed:

**On Municipal Property:** Municipal buildings, parks, facilities, or any municipal infrastructure.

**On Poles and Devices:** Hydro poles, utility poles, streetlight poles, and traffic control devices and signage.

**At Intersections:**

- Within a 6-metre sight triangle at intersections
- In a location that obstructs sightlines
- In a manner that interferes with safe vehicle or pedestrian movement

**3. Polling Station Proximity (Election Day Only)**

On the day of an election, no election sign shall be located within 100 metres of any property line of a polling station. The Township of Harley currently has one polling station, located at 999155 Hwy 11.

Any such sign must be removed, regardless of whether it is located on private property or a road allowance.

Refer to Schedule A – Polling Station Proximity Map for the restricted area.

#### 4. Sign Removal

All election signs must be removed within 48 hours, starting at 6:00 a.m. the day after the election.

#### 5. Enforcement

The Clerk may have any election sign removed that does not comply with this By-law, without notice, and the owner will not be entitled to compensation.

#### 6. Exemptions

- Election signs placed on private property with the consent of the property owner, subject to safety restrictions, are permitted.
- No additional regulations regarding sign size, number of signs, deposits, fees, or permit requirements are imposed.

#### 7. Administration and Severability

1. That this by-law comes into force and effect upon third and final reading.
2. That all other by-laws of parts thereof and all and any resolutions of said Council, contrary hereto or inconsistent herewith, be and the same are hereby repealed.
3. That the Clerk-Treasurer for the Township of Harley is hereby authorized to make any minor modifications or corrections of an administrative, numerical, grammatical, semantically or descriptive nature or kind to the by-law and schedule as may be deemed necessary after the passage of this by-law.

**READ a FIRST, SECOND, and THIRD TIME and FINALLY PASSED** this 14<sup>th</sup>, day of April, 2026.

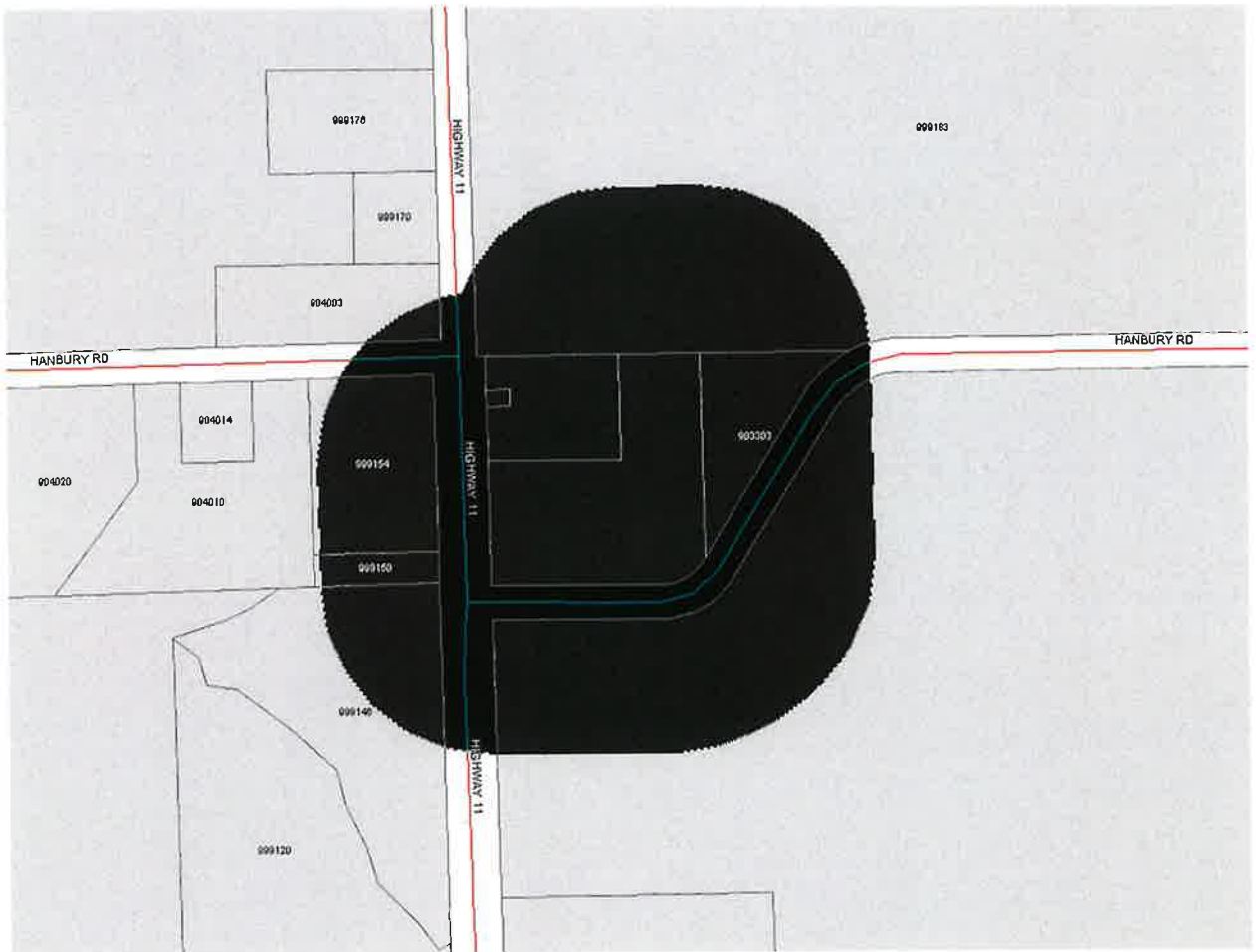


*Pauline Archambault*  
\_\_\_\_\_  
REEVE

*[Signature]*  
\_\_\_\_\_  
CLERK

## Schedule A – Polling Station Proximity Map

**Title:** Election Sign Restriction Area – Polling Station, 999155 Hwy 11



### Notes:

1. The 100-metre circle is measured from the lot line of the polling station property.
2. On election day, no election sign(s) are permitted within this black circle, including on private property or road allowances.
3. The Township may remove any election sign(s), that does not comply with this By-law, without notice.

**Diagram 1**  
Sight Triangle

